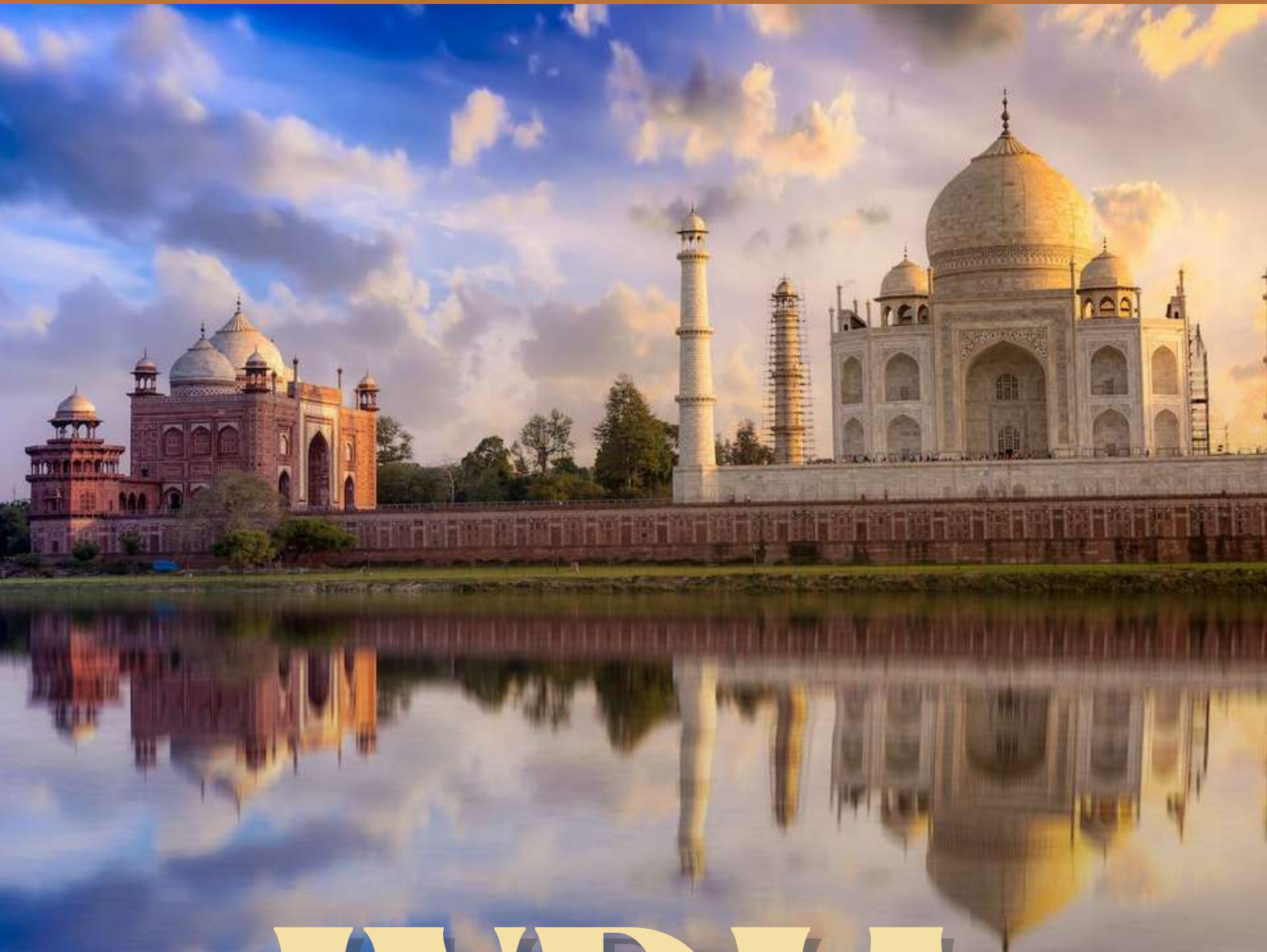


Travel 'n' Shop

Arabian Resources Publishing LLC | Volume No. 25, August 2022



Source: theconversation.com

INDIA

INDIA HAS THE THIRD HIGHEST AMOUNT OF BILLIONAIRES IN THE WORLD

INDIA HAS THE HIGHEST POPULATION OF VEGETARIANS IN THE WORLD

THE CITY OF VARANASI IS BELIEVED TO BE ONE OF THE OLDEST LIVING CITIES IN THE WORLD

THE GAME 'SNAKES AND LADDERS' ORIGINATED IN INDIA

ABOUT 70% OF THE WORLD'S SPICES COME FROM INDIA

INDIA IS HOME TO THE WETTEST INHABITED PLACE ON EARTH

INDIA HAS THE SECOND HIGHEST POPULATION IN THE WORLD

Rulers of the U.A.E.



**H.H. Sheikh Mohammed bin Zayed Al Nahyan,
President of the U.A.E and Ruler of Abu Dhabi**



**H. H. Sheikh Mohammed bin Rashid Al
Maktoum, Vice-President and Prime
Minister of the UAE, and the Ruler of Dubai**



**H.H. Sheikh Hamdan bin Mohammed bin Rashid
Al Maktoum, Crown Prince of Dubai**

Travel 'n' Shop

Editor's Note



DR. S.M. TAHIR

As summer is coming to an end and the summer heat has decreased, you'll find some great activities in this month's issue to do in Dubai!

Kite beach is a great place to go outdoors and experience some fun water activities such as Jet skiing, swimming, surfing, and a lot more!

Dubai aquarium is an amazing place to visit and explore. Learn more about the beautiful sea creatures and look at them closely! It is home to more than 33k aquatic creatures.

Find out about some beautiful places and tourist attractions in the most diverse country, India. It is one of the countries with the greatest ethnic diversity, and it is home to several castes and tribes, as well as hundreds of minor linguistic groups from a variety of different language families. It also has a large number of different religions and sects.

Wishing a happy summer break to all our readers!

A handwritten signature in black ink, appearing to read 'S.M. Tahir', with a horizontal line underneath.

Dr. S.M. Tahir
Editor in Chief

INDIA

India is a union of states, usually referred to as Bharat. It has a parliamentary form of government and is a Sovereign Socialist Secular Democratic Republic. The Indian Constitution, which was approved by the Constituent Assembly on November 26, 1949, and took effect on January 26, 1950, governs the Republic.

The Constitution establishes a parliamentary form of government with some unitary characteristics and a federal framework. The President is the official head of the Union's Executive under the Constitution. According to Article 79 of the Indian Constitution, the President and the two Houses known as the Rajya Sabha and the House of the People make up the Council of the Parliament of the Union (Lok Sabha).

According to Article 74(1) of the Constitution, the President will exercise his or her duties in line with the advice of the Council of Ministers, which is led by the Prime Minister. Thus, the Council of Ministers, which is led by the Prime Minister, has the actual executive power.

India, a nation that makes up the majority of South Asia. New Delhi, the nation's capital and administrative hub, was constructed in the 20th century south of Old Delhi, the city's historic center. Its population, which is made up of thousands of different ethnic groups and probably hundreds of different languages, is governed by a constitutional republic that serves a very diverse population. India, which follows China as the most populous nation, has around one-sixth of the world's population.

India continues to be one of the nations with the widest ethnic diversity. India is home to several castes and tribes, as well as more than a dozen main and hundreds of smaller linguistic groups from several separate language families, in addition to its numerous faiths and sects. Religious minorities, including as Muslims, Christians, Sikhs, Buddhists, and Jains, continue to make up a sizeable section of the population; in total, their numbers outnumber those of any other nation except China.

TAJ MAHAL



On the right bank of the Yamuna River in the Indian city of Agra stands the Islamic ivory-white marble mausoleum known as the Taj Mahal. It was built in 1632 at the request of Mughal emperor Shah Jahan (reigned 1628–1658), who wanted to house the tomb of Mumtaz Mahal, his favorite wife. It also contains Shah Jahan's own tomb. The tomb is the focal point of a 17 hectare (42 acre) complex that also includes a mosque and a guest house. The complex is surrounded on three sides by a crenellated wall and is set in formal gardens.

Although the mausoleum's construction was substantially finished in 1643, other project phases required a further 10 years of work. The Taj Mahal complex is thought to have been finished in its entirety in 1653 at a cost estimated at the time to be around 32 million rupees, or roughly 70 billion rupees (almost \$1 billion) in modern currency. A board of architects chaired by Ustad Ahmad Lahauri, the emperor's court architect, oversaw the construction project, which employed some 20,000 workers. The Taj uses a variety of symbolism to depict the divine and the beauty of nature.

In 1983, the Taj Mahal was named a UNESCO World Heritage Site in recognition of its status as "the gem of Muslim art in India and one of the most beloved works of art in human history." Many people believe it to be the finest example of Mughal architecture and a representation of India's long history. More over 6 million people visit the Taj Mahal each year, and it was chosen as one of the New 7 Wonders of the World (2000–2007) in 2007.

AMBER FORT



Source: hotcore.info

In Amer, Rajasthan, India, there is a fort known as Amer Fort or Amber Fort. Amer, a town with a 4 km² (1.5 sq mi) area, is situated 11 km (6.8 mi) from Jaipur, the state capital of Rajasthan. Raja Man Singh first constructed the Amber Fort and the town, and Sawai Jai Singh later added to them. The main tourist attraction in Jaipur is situated on a hilltop. The artistic aspects of Amer Fort are well known. The fort overlooks Maota Lake, the primary water source for the Amer Palace, and has broad ramparts, a number of gates, and paved roads.

A superb example of Rajput architecture is Amer Palace. Mughal architecture is a strong impact on several of its structures and works. The stunning, magnificent mansion is built of red sandstone and marble and is divided into four levels, each of which has a courtyard. Its components are the Sheesh Mahal (mirror palace), also known as Jai Mandir, the Diwan-e-Aam, or "Hall of Public Audience," the Diwan-e-Khas, or "Hall of Private Audience," and the Sukh Niwas, where winds are used to artificially create a cool climate by blowing over a water cascade inside the palace. Because of this, the Amer Fort is also known as the Amer Palace. The Rajput Maharajas and their families lived in the palace.

MYSORE PALACE



Source: www.tripoto.com

Amba Vilas Palace, sometimes referred to as the Mysore Palace, is a historical building that serves as a royal residence (house). It is in the Karnataka city of Mysore. It once served as the Wadiyar dynasty's official house and the administrative center for the Kingdom of Mysore. The palace faces the Chamundi Hills to the east and is located in the heart of Mysore. There are seven palaces total in Mysore, including this one, and it is frequently referred to as the "City of Palaces." The Mysore Palace, on the other hand, exclusively refers to the building inside the new fort.

The area now occupied by the palace was formerly referred to as Mysuru. The original palace inside the Old Fort was established by Yaduraya in the fourteenth century, although it was often destroyed by fire and rebuilt. While the new fort was constructed of stone, bricks, and wood, the Old Fort was made of wood and hence easily caught fire. After the Old Palace burned down, the current building was built between 1897 and 1912. It is also referred to as the New Fort. With more than six million annual tourists, Mysore Palace ranks second on the list of the most well-known tourist destinations in India after the Taj Mahal.

INDIA GATE



Source: www.goibibo.com

A war memorial known as the India Gate is situated along Rajpath, on the eastern border of New Delhi's "ceremonial axis," which was once known as Kingsway. It serves as a monument to the 84,000 British Indian Army personnel who lost their lives between 1914 and 1921 in the First World War, in Gallipoli, France, Flanders, Mesopotamia, Persia, East Africa, and other locations in the Near and Far East. It also commemorates the Third Anglo-Afghan War. The gate bears the names of 13,300 military members, some of them are British soldiers and officers. The gate, which Sir Edwin Lutyens designed, is frequently likened to the Arc de Triomphe in Paris and the Gateway of India in Mumbai. Its design is reminiscent of monumental arches like the Arch of Constantine in Rome.

Following the Bangladesh Liberation Military in 1972, a building was constructed beneath the archway that included a black marble pedestal with a reversed rifle, a war helmet on top, and was surrounded by four eternal flames. Since 1971, this building, known as Amar Jawan Jyoti, has functioned as India's unidentified soldier memorial. The Prime Minister pays respects to the Amar Jawan Jyoti at India Gate, one of the country's largest war memorials, on Republic Day each year before the Republic Day parade begins.

QUTUB MINAR



Source: www.timesnownews.com

The Qutb complex, which is located at the site of Lal Kot, the earliest fortified city in Delhi and founded by the Tomar Rajputs, includes the Qutb Minar, a minaret and "victory tower." It is located in South Delhi, India's Mehrauli neighborhood, and is a UNESCO World Heritage Site. It was mostly constructed between 1199 and 1220 and is one of the most popular tourist attractions in the city.

It can be compared to the 62-meter all-brick Minaret of Jam in Afghanistan, which was built in 1190, roughly a decade before the Delhi tower's likely beginning. Both have intricate geometric designs and inscriptions on their surfaces. The summit of each stage of the Qutb Minar includes a shaft that is fluted with "superb stalactite bracketing under the balconies." Generally speaking, India was late to adopt minarets, and those that do exist are frequently separate from the main mosque.

MAHARAJAS EXPRESS



Source: www.the-maharajas.com

The Indian Railway Catering and Tourism Corporation owns and runs the luxury train known as The Maharajas' Express. As soon as you step into the coach, remember this fantastic journey's first impressions, Take in the luxury that permeates the entire ship. The multi-cuisine dinner spread is just a taste of the four days of hospitality that await. Dream of the stellar spectacle that is waiting for you as you recharge with a restful night's sleep rhythmically timed to the chug of the train in one of the palace-like suites.



ATLANTIS THE PALM

Atlantis The Palm, Dubai is a five-star resort hotel situated on the highest point of the United Arab Emirates' Palm Jumeirah. The Atlantis myth serves as the inspiration for this island's first resort, which also has distinct Arabian features. As a joint venture between Kerzner International Holdings Limited and Istithmar World, the resort debuted on September 24, 2008.

The Hotel

The East and West Towers, which make up the resort's two lodging wing's total of 1,548 rooms, are connected by the Royal Bridge Suite. It is complemented by the Lost Chambers Aquarium, which is home to approximately 65,000 marine animals, and the Aquaventure water park.

Development

As a joint venture between Kerzner International Holdings Limited and Istithmar World, Atlantis The Palm debuted on September 24, 2008. Kerzner's 50% ownership interest in the property was purchased by Istithmar World in April 2012 for US\$250 million. Kerzner International Resorts continues to oversee the property's management. The architect was from the international luxury hotel design firm Wimberly, Allison, Tong and Goo (WATG). A global construction company with headquarters in the UK, Laing O'Rourke, received the project's main contract. The 23-story hotel and water park's design and construction were handled by Laing O'Rourke.



Underwater rooms

Atlantis's Poseidon and Neptune Underwater Suites The Palm frequently makes lists of the most unusual lodging since it has two of the few underwater hotel rooms in the entire world.

The upper, entrance floor is at ground level and totals 165 square meters (1776 square feet), while the master bedroom and en-suite bathroom are submerged. The bedroom and bathroom both have nearly floor-to-ceiling windows that look out over the resort's Ambassador Lagoon, which is home to a variety of unique marine life.



YOUR FAVOURITE INDIAN SUPERMARKET AT YOUR PLACE.

OUR SPECIALITIES

Indian Masala, Mix Flour, Dals, Rice, Pickle, Chutney, Papad, Nuts, Dry Fruits, Mukhwas, Herbs, Instant Food, Canned Food And Other Varieties Of Indian Foodstuff.

FRIED KHAO OILY NAHI

PRESENTING PEACOCK OLIVE OIL THAT COOKS IN 1/3rd QUANTITY OF OTHER OILS, MAKING THE FOOD LIGHTER AND LESS OILY.



Our products are also available at Talabat, el Grocer, Swan, Instashop and Now Now.

SHOPPING MADE EASIER
DOWNLOAD THE APP NOW

GO GREEN TOGETHER
SCAN QR CODE FOR DOWNLOADING
THE APP FROM PLAY/APP STORE.



Email: customercare@adildubai.com Website: adilstore.com Tel: 04 3706666 055 2 88 99 77, 050 9 44 16 16



Al Adil

TRADING CO. L.L.C.

SUPERMARKETS • FLOUR MILLS • SPICE INDUSTRIES

THE HOME OF INDIAN FOODSTUFFS

UAE | BAHRAIN | OMAN | SAUDI ARABIA | INDIA

- DUBAI Al Barsha I: 04 3951336 • Al Barsha II: 04 3233377 • Al Barsha III: 04 5488131 • Bur Dubai: 04 3525324
- Dubai Rola: 04 3558398 • Meena Bazar: 04 3300844 • Karama I: 04 3357434 • Karama II: 04 3708588
- Karama III: 04 3583131 • Oud Metha: 04 3708480 • Qusais I: 04 2986912 • Qusais II: 04 2511633
- Qusais III: 04 2216783 • Silicon: 04 3488600 • Discovery Garden I: 04 4213718 • Discovery Garden II: 04 5800752
- JLT: 04 5801104 • Business Bay: 04 5890823 • DIP: 04 8878738 • JVC: 045852328.
- SHARJAH Raha: 06 5628656 • Clock Tower: 06 5218641 • National Point: 06 5442315 • Al Nahda: 06 5255535
- Abu Shagara: 06 5595030 • ABU DHABI Electra: 02 6761162 • Passport Road: 02 6438777
- Khalidiya: 02 6317676 • Tourist Club: 02 5464009 • Musaffah: 02 5538104 • AJMAN Al Bustan Area: 06 7310203
- BAHRAIN Zubarah Avenue: +973 17777377 • Yateem Centre (First Gate): +973 17400799
- Um Al Hassam: +973 17400977 • OMAN Ruwi Muscat: +968 97013601

Images displayed are for illustration purpose only, actual products may be different from images displayed.

Dubai Aquarium and Underwater Zoo

The Dubai Aquarium and Underwater Zoo's enormous, 10 million-liter tank is home to more than 33,000 aquatic creatures, including the world's largest collection of sand tiger sharks. The main Aquarium tank, which is one of the world's largest suspended aquariums and measures 51 meters in length, 20 meters in width, and 11 meters in height, can be viewed in a variety of ways.

The aquarium, which reaches the third story of The Dubai Mall, is one of the most well-liked sights in the area and is appreciated by both kids and adults. It is home to 140 different species of marine life and provides many amazing opportunities to explore the underwater world. Stroll through a 48-meter tunnel while the aquarium surrounds you on all sides. With stingrays and sand tiger sharks swimming above, it is a full fish-eye perspective.

The aquarium, which reaches the third story of The Dubai Mall, is one of the most well-liked sights in the area and is appreciated by both kids and adults. It is home to 140 different species of marine life and provides many amazing opportunities to explore the underwater world. Stroll through a 48-meter tunnel while the aquarium surrounds you on all sides. With stingrays and sand tiger sharks swimming above, it is a full fish-eye perspective.



Source: www.cntravellerme.com



Source: www.pinterest.com

KITE BEACH Dubai



Source: www.lonelyplanet.com

One of Dubai's most well-liked beaches, Kite Beach is ideal for sunbathers, foodies, and sports fans alike. The obstacles at Kite Beach are plentiful if you're serious about your watersports and want to test your abilities on one of Dubai's top free beaches. High-quality equipment that can be rented is close to the Jumeirah neighborhood along the sand.

This long, spotless stretch of white sand, which lies a bit to the north of Jumeirah Public Beach, is a popular destination for active people, offering a variety of sports like kitesurfing, beach tennis, beach volleyball, and kayaking. Additionally, a skatepark with shade and a running trail are close by.

There are lots of food trucks and cafes nearby, as well as showers, wi-fi, restrooms, and changing rooms. The sand is also very clean. The Burj Al Arab, one of Dubai's most famous buildings, is also visible from the shore in stunning fashion. On Friday and Saturday, when a coastal market with crafts and souvenirs opens, it becomes extremely busy.

The beach is accessible by traveling along Jumeirah Road; it is situated behind the Saga World shopping mall. There is parking available, and Al Manara Mosque is near to a sizable lot. There is no charge to enter the beach.

Restaurants near Kite Beach

Right near to Kite Beach, there are a good number of eateries that will satisfy most palates. Options include the well-known burger and steak restaurant X Factor, the Italian-themed Tomato & Basilico, and Circle Café, which offers breakfast, brunch, coffee, and smoothies. There are also a lot of takeaway coffee shops, ice cream shops, and food trucks along the beach, including the renowned Salt, which sells delicious sliders.

Hotels near Kite Beach

Jumeirah has a wide range of lodging choices. Luxury seekers should head to the hotels of Madinat Jumeirah or the Burj Al Arab. The collection of budget-friendly hotels and hotel-apartments near to the Mall of Emirates provides excellent value. Beach Walk Hotel and Park Regis Boutique Jumeirah, both a 25 to 30-minute walk from Kite Beach, are two excellent choices for proximity.

Things to do at the Kite Beach

You can enjoy all the usual beach activities, plus a lot more. With kite surfing, paddle boarding, a running track, a skate park, volleyball, a lending library, a children's waterpark, an outdoor gym, an adventure park, and a lot of food trucks, Kite Beach is packed with things to do.



Source: www.hidubai.com



We offer a wide variety of French fragrances, customized and white-labeled for our clients' needs.

Stock lots of our existing collections also available for international orders!

For further information please contact:

info@arpdubai.com



MOZAMBIQUE

SOFALA PROVINCE

The Province of Sofala, is located in the central region of Mozambique, bordering the Northeast by the Province of Tete, to the north with Zambezia Province, through the Zambezi River, to the south with the Province of Inhambane, through the Save River, to the east is bathed by the Indian Ocean and to the west by the

Province of Manica, a total surface area of 68,108 km². Its capital is the coastal city of Beira. The province is divided into 13 districts and has, since 2013, 5 municipalities: Beira, Dondo, Nhamatanda, Gorongosa and Marromeu.

It has a population of about 2,457,828 inhabitants, and a population density of 16.1 inhabitants per km² (INE 2020). And a humid tropical climate. The highest average temperature in Sofala is 30°C and the lowest is 24°C in July. The province is served by an international corridor (Beira Corridor), equipped with a railway line and a highway (Beira - Machipanda), and Seine Line. A pipeline that connects the city of Beira to Zimbabwe.

In the capital city of the Province (Beira) there is a Port and an International Airport that guarantee a quick connection with the world.

The hunting and contemplation tourism is one of the great attractions of Sofala, for the recognition of the occurrence of rare forest and faunistic species and for their diversity. Sofala is part of the 5 chosen tourist destinations, adventure tourism, and ecotourism. Extension: Gorongosa National Park, Marromeu Special Reserve, (Chimanimani National Reserve, Monte Cabeça do Velho - Manica Province) and Savane Beach (Beira City).

Characterization of the City of Beira

Beira, the capital of Sofala province, is located about 1190 km north of Maputo, in the heart of the Indian Ocean coast. It is a port city on the Mozambique channel. The municipality has an area of 633 km², an average altitude of 14 meters below the average sea level, and is situated at coordinates 19° 50' south and 34° 51' east. It has a northern and western boundary with the district of Dondo, to the east with the Indian Ocean, and to the south with the district of Búzi.

The city is located in a swampy region, near the mouth of the Pungué River, and on stretches of sand dunes along the Indian Coast. The natural vegetation is characterized by lowlands and coastline with mangroves.

The city of Beira was founded in 1887 by the Portuguese and, from 1891, administered and developed by the Company of Mozambique - a majestic company to which was given the concession of the lands that cover the current provinces of Manica and Sofala, and which had its headquarters in Beira.

In 1942 the city passed to the direct administration of the Portuguese government, a situation that remained until 1975, the year of Mozambique's independence.

Originally called Chiveve (the name of a local river), it was renamed after The Prince of Beira, D. Luís Filipe, who in 1907 was the first member of the Portuguese royal family to visit Mozambique. D. Luís Filipe was the bearer of the royal decree that granted Beira the status of city.

The Company of Mozambique built the railway line connecting then Rhodesia, which opened in 1899. On August 20, 1907, Beira was elevated to city status, a year later, electric lighting was inaugurated and, in 1911, urban telephone service. Already under direct administration of the Portuguese government, the construction of a new railway station, completed in 1966, began. Even before independence, Beira stood out for its well-equipped seaport.



Source: www.pinterest.com

POPULATION AND CUSTOMS



Beira is a true confluence of Mozambican cultures (South, Central, and North zones) and particularly with some influences from other cultures of countries abroad, one of the reasons that contribute to the easy integration of its visitors. Artisanal fishing and informal trade, very aggressive, in almost all arteries of the area especially in the commercial area of the city, make the day-to-day of the citizens of Beira.

The city of Beira as such does not yet have a dish of choice as a typical dish that can be recommended to tourists and that is more available. Nevertheless, there are some delicacies that are revealed at the domestic levels such as the case of pasta with Txi-bhacaiiau (cornflour and dried fish roasted), Mbewa (small edible rats caught in machambas). It should be recalled that the City of Beira is also recognized for its marine products (shrimp, lobster, fish, clams, crab, etc.) of Sofala bank that is considered the tastiest in the world.

PROVINCE TOURISM POTENTIAL

The tourist potential of the province is undeniable: with a network of 402 tourist developments, 180 Accommodation with a capacity of 2,579 rooms and 3,347 beds, 208 Of Catering and Beverages with a capacity of 3,126 tables and 9,339 chairs and 16 Travel Agencies, 1 museum, 24 historical sites, 35 sacred, 17 monuments built and 14 naturals.



It has an extensive and varied range of tourist resources that place it in a privileged and competitive situation in the national, regional, and international tourist market, to highlight: Gorongosa National Park, the largest Buffalo Reserve of Marromeu, the caves of Kodzue and Boca, the beaches with crystal clear waters of Sengo and Savane, the thermal waters, the Shrine of Mwene Mukuro and the built heritage of the city.



Gorongosa National Park

Gorongosa National Park is a conservation area located on the southern edge of the Great African Rift Valley, in the heart of central Mozambique. The Park, with a little more than 4000 km², includes the valley and part of the surrounding plateaus. The rivers that originate in the neighboring Mount Gorongosa, which reaches 1,863 meters in height, irrigate the plain. On 20 July 2010, the Mozambican government decided to expand the park's area to 4,067 km², as well as create a 3.30 km² buffer zone around it. The seasonal floods and inundations of the valley, which is made up of a mosaic of different soil types, create a diversity of distinct ecosystems. The prairies are dotted with areas of acacias, savannah, dry forest in a sandy area, lagoons filled seasonally by the rains, and thickets on the mounds erected by termites. The highlands contain miombo and montane forests and a spectacular rainforest at the foot of a series of limestone gorges. This combination of unique characteristics once supported one of the densest populations of wildlife in all of Africa, including charismatic carnivores, herbivores, and nearly 500 species of birds. But the number of large mammals has been reduced. The Carr Foundation/Gorongosa Restoration Project, a USA non-profit organization, has partnered with the Government of Mozambique to protect and restore the Gorongosa National Park ecosystem and develop an ecotourism industry to benefit local communities. The Park has an impressive valley, with the bestknown geological features of Africa that stretch along East Africa, from Ethiopia to the Central region of Mozambique, situated 14 meters above sea level, protecting a vast ecosystem well defined, shaped, and fed by the many rivers that flow into Lake Urema. The Nhandunguè River, for example, crosses the Baruè Plateau on its normal course to the valley.

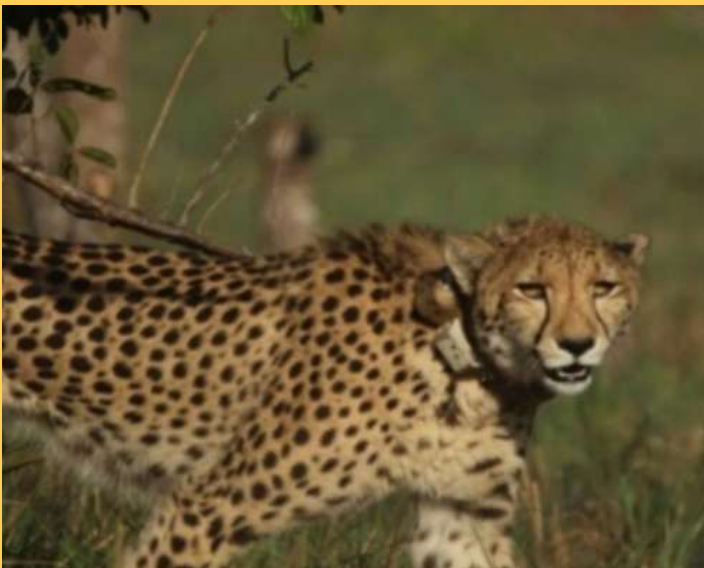
The Nhanduè and Mucombezi rivers enter the Park from the North. Serra da Gorongosa contributes to the Vunduzi River. Many streams and channels enter the Park from the Cheringoma Plateau. All those rivers form the Urema Basin. Lake Urema is located in the middle of the valley, about three-quarters of the way down from the northern border of the Park. The Muaredzi River, which flows from the Cheringoma plateau, deposits sediment near the lake outlet, slowing down its drainage. This "buffer" causes Lake Urema to expand greatly in the rainy season. The water that manages to pass this alluvial cone continues through the Urema River, flows into the Pungue, and finally into the Indian Ocean. In the rainy season when there is flooding, the water invades the valley and the plains, covering about 200 square kilometers of land, in worse years. During some dry seasons, the lake's waters shrink to the size of 10 square kilometers. The constant expansion and retraction of the waters in these lowlands, through a patchwork of savannah, forest, and thicket, create a complex mosaic of small ecosystems that contain more abundance and diversity of wildlife than any other area of the Park. Gorongosa is inhabited by an impressive diversity of animals and plants, some of which are found nowhere else in the world, such as the recently discovered new species of shrew, *Myosorex meesteri*. The wealth of biodiversity creates a complex world where animals, plants, and people interact. From the smallest insects to the largest mammals, each plays an important role in Gorongosa's ecosystem.

Marromeu National Reserve

The Marromeu National Reserve is a conservation area in Mozambique, covering approximately 1,560km². It was declared the first wetland of international importance in Mozambique. The African buffalo is one of the most prevalent species and has a variety of waterfall.

The Marromeu National Reserve is a conservation area in Mozambique, covering approximately 1,560km². It was declared the first wetland of international importance in Mozambique. The African buffalo is one of the most prevalent species and has a variety of waterfall.

It has one of the highest concentrations of waterfowl of international importance. The Reserve was created with the aim of protecting the largest population of buffalo in the world.



KHODZUECAVES

Located 200km from the city of Beira, with several caves, a source of the Khodzue River, waterfalls, trails, traditional communities, archaeological and paleontological sites. It is really a true paradise hidden between valleys and mountains.



ESTAQUINHA CAVES (BOCA)

The caves of Regulado Bôca, are located in the district of Búzi, but specifically in the Administrative Post of Estaquinha, approximately 58 km from the village of Bôzi.



BUILT HERITAGE OF BEIRA CITY



CHIVEVE RIVER

It is a kind of heart and lung of the city of Beira that is located in its center. The history of the emergence of this city and socio-economic development is linked to the concern. This river is courted by several miles of drainage ditches that seep the rainwater as well as the high tide swing of the ocean when the sea gets brave.

It is a system that allows a healthy coexistence between the sea and the city. It is a natural attraction for its landscape beauty, with support infrastructures for tourists: restaurants, takeaways, amphitheater, and green structure with leisure activities.

CFM SQUARE



It is a reference building in the urban context, distinguished by the shape of its enviable architecture; This development of the Railways of Mozambique - Centro constituted the end of the local railway connection to the interland and with various services: banking and catering. Designed by Portuguese architects Afonso Garizo do Carmo, Francisco de Castro, and Paulo de Melo Sampaio and inaugurated on October 1, 1966.

TOURIST SUPPORT SERVICES

TRANSPORT:

Public and private transport network operates in the city of Beira facilitating the movement of people from residential areas to commercial and work areas. Likewise, other inter-district-level careers leave and arrive in Beira on a daily basis, making connections with the South, Central, and Northern areas of the Province and others inter-provincial, in this case to the South, Central, and Northern areas of the country.

In terms of more personalized transport, Beira has taxi, rent-a-car and agency services, offered by private operators for 24 hours daily.

BANKS:

As for banking services, several banking institutions operate in the city of Beira, comprising Commercial and Micro-finance Banks with ATM services guaranteed 24 hours a day.

FUEL:

Similarly, gas stations and stations are installed for refueling, maintenance and car washing, including convenience stores in strategic areas of the city.

MOBILE TELEPHONY:

Additional fixed and mobile telephony services of companies.

ELECTRICITY:

It comes from cahora-bassa line, distributed by the company Electricidade de Moçambique, E.P.



AlCabanaTM

GO. DISCOVER. ENJOY.

Avail upto 15% Discount on Customized Holiday Packages

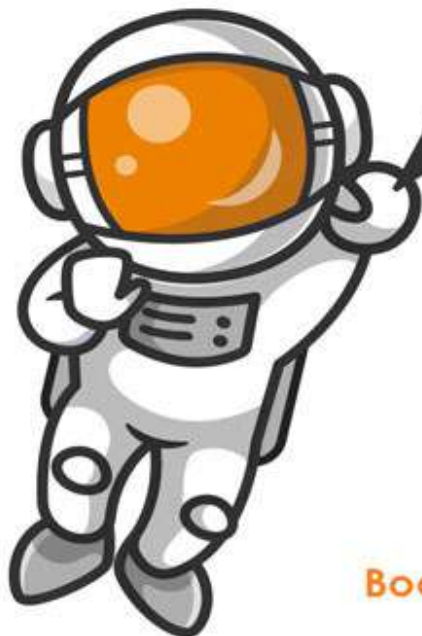
**Get in touch with
Our Travel Consultant :**

Call/ Whatsapp:
+971-56-1700776

Customer Care:
+971-4-5909851

Email:
sales@alcabana.com

Office:
403, Park Avenue,
Dubai Silicon Oasis,
Dubai, UAE



Global Travel Services

- Holiday Packages ●
- Flight Tickets ●
- Hotel Bookings ●
- Tourist Visa ●
- Car Transfers ●
- Travel Insurance ●
- Group Travel ●
- City Tours ●
- Dhow Cruise ●
- Desert Safari ●
- Theme Park ●

Book Your Flights & Hotels Online
www.alcabana.com

U.A.E • INDIA • PAKISTAN • USA • CANADA • KSA



Think twice before you print this document. Save Paper, Trees and Earth!

— Hotel Bookings —

BOOKING

HOTEL

Email: sales@alcabona.com
 Contact: +971-4-5909851
 Website: alcabona.com

— Medical Tourism —

sales@alcabona.com | +971-4-5909851
 alcabona.com

— Visa Assistance —

sales@alcabona.com | +971-4-5909851
 alcabona.com

— Car Transfer —

sales@alcabona.com | +971-4-5909851
 alcabona.com

Flight Tickets

Email: sales@alcabona.com
 Contact: +971-4-5909851
 Website: alcabona.com

— City Tours —

sales@alcabona.com | +971-4-5909851 | alcabona.com

HOLIDAY PACKAGES

Email: sales@alcabona.com
 Contact: +971-4-5909851
 Website: alcabona.com

Dhow Cruise

sales@alcabona.com | +971-4-5909851
 alcabona.com

Desert Safari

Email: sales@alcabona.com
 Contact: +971-4-5909851
 Website: alcabona.com

Theme Park

sales@alcabona.com | +971-4-5909851 | alcabona.com

Private Charter

Email: sales@alcabona.com
 Contact: +971-4-5909851
 Website: alcabona.com

Medical Helicopter

sales@alcabona.com | +971-4-5909851
 alcabona.com

Moments

Email: sales@alcabona.com
 Contact: +971-4-5909851
 Website: alcabona.com

La Perle

Email: sales@alcabona.com
 Contact: +971-4-5909851
 Website: alcabona.com

Events

Email: sales@alcabona.com
 Contact: +971-4-5909851
 Website: alcabona.com

Glamping

sales@alcabona.com | +971-4-5909851 | alcabona.com

Eco Tourism

Email: sales@alcabona.com
 Contact: +971-4-5909851
 Website: alcabona.com

Diving Trips

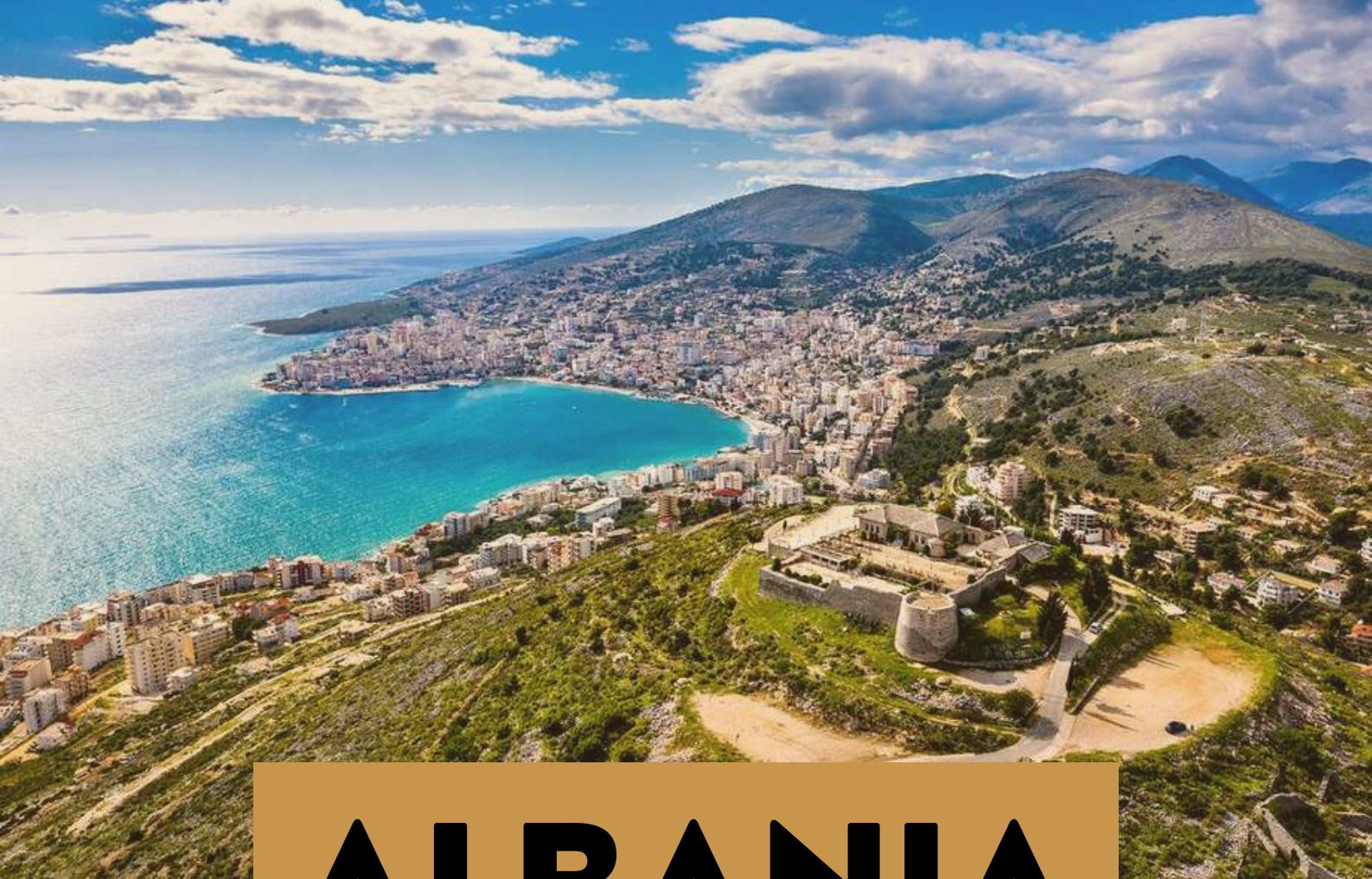
sales@alcabona.com | +971-4-5909851 | alcabona.com

— Sky Diving —

sales@alcabona.com | +971-4-5909851 | alcabona.com

Kayaking

sales@alcabona.com | +971-4-5909851
 alcabona.com



Source: www.kimkim.com

ALBANIA

Despite the fact that Albania is a small country, there is a lot to see and do there. The long, mountainous coastline of Albania, which borders Macedonia, Greece, Kosovo, and Montenegro, is among the most picturesque in the world.

Albania is slowly gaining popularity with tourists, but it is still incredibly unexplored and largely untouched. Along with having some of the clearest Mediterranean air and most amazing beaches in the world, Albania also has some of the best examples of Ottoman architecture.

And probably most importantly, compared to much of the rest of this region of Europe, traveling to Albania is still very affordable.

TIRANA



Source: emerging-europe.com

Many tourists who are interested in seeing Albania's top locations will begin their explorations in the country's capital city of Tirana.

There aren't many tourist hotspots in the city, but the Et'hem Bey mosque from the 18th century is definitely worth a trip.

Like the vast majority of Albanian locals, Tirana residents are incredibly friendly, and the city is incredibly inexpensive with unexpectedly great cuisine and drinks both very affordable.

One of Tirana's most significant locations is Skanderbeg Square, which also houses the National Historical Museum.

A statue of the illustrious Albanian national hero Skanderbeg stands in the center of Skanderbeg Square, which serves as the beating heart of Tirana.

BERAT



Source: www.passportsandpreemies.com

The town of Berat, which is in the center of Albania, is thought to be one of the oldest in the nation.

Due to its blend of Ottoman and Albanian architecture, Berat is frequently referred to by its nickname, the City of a Thousand Windows.

The castle Kalaja, built in the year 140, is the principal tourist attraction in Berat and is still inhabited by hundreds of people.

In 2008, Berat, once among the Ottoman Empire's most significant Albanian cities, was included on the list of Unesco World Heritage Sites.

GJIROKASTRA



Source: www.chasingthedonkey.com

Gjirokastra, a Unesco city, is without a doubt one of Albania's top tourist destinations. In Gjirokastra, which has an incredible castle that dominates the skyline and contains a military museum and an art gallery, you can see distinctive Ottoman period architecture, including dwellings built like tiny castles.

Every five years, a folklore festival is held in the castle of Gjirokastra; the most recent one was in 2015. Anyone traveling through this region of the country should plan to visit the old Ottoman bazaar in Gjirokastra.

Ismail Kadare, a well-known author, and Enver Hoxha, a former dictator of Albania, were both born in Gjirokastra; their former residences are now museums.

KRUJA



Source: www.viator.com

Kruja, which is only a short drive from Tirana, the country's capital, is an essential stop for anyone visiting Albania for the first time.

Although Kruja is the location of the national ethnographic museum, it is primarily known as the location of the Skanderbeg museum. The museum, which is housed in the Kruja castle, is one of Albania's most significant and well-liked tourist destinations.

George Kastrioti Skanderbeg, a hero in Albania, spent three decades defending the nation from Ottoman assault from this citadel.

Additionally, the castle provides breathtaking views of the Adriatic Sea. In close proximity to Kruja lies the national park Qafe Shtama and the mausoleum of Sari Saltik.



رعاية الطفل Baby Care



Gentle Care for your baby

Paraben Free | Tear Free Formula | Soap Free

Download the
Cool & Cool
Mobile App.





Source: www.britannica.com

SLOVENIA

Slovenia is a Central European nation famous for its lakes, ski resorts, and mountains. The town of Bled is located on Lake Bled, a glacial lake fed by hot springs, and it is home to a medieval castle perched on a cliffside. In the capital of Slovenia, Ljubljana, baroque facades coexist with Joe Plenik's landmark Tromostovje (Triple Bridge), which crosses the Ljubljanica River's sharp bend.

Slovenia is a beautiful nation with a prime location in the center of Europe. The Eastern Alps, the Adriatic Sea, the Balkans, Italy, Croatia, and Hungary all encircle the country, making it reachable from many parts of Europe.

Slovenia offers travelers the chance to visit a range of locations, including lively towns, quaint villages, snow-capped mountains, and picturesque beaches. Aim to visit as many of Slovenia's top attractions as your schedule will permit on your next vacation.

MARIBOR

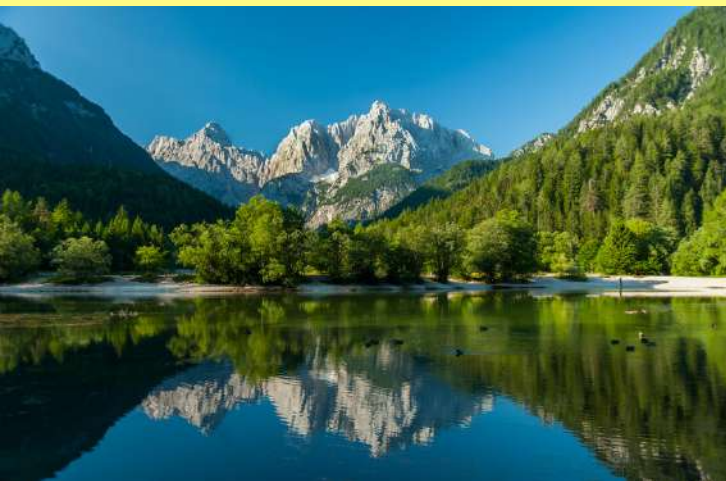
Maribor is Slovenia's second-largest city after Ljubljana. It is positioned near to the Austrian border and is developed along the Drava River's banks. Maribor is renowned for its abundant outdoor recreation facilities as well as the wine growing region that surrounds the city.

The Stara trta, the world's oldest vine, which has been growing for more than 450 years, is located near Maribor. Visit the well-known Old Vine House and the vast Vinag Wine Cellar to continue the wine tour. Don't overlook Maribor's main squares, Slomkov Square, Main Square, and Castle Square, which are all filled with charm and beautiful old buildings.



Source: sofaadventures.com

KRANJSKA GORA



Source: wonderguide.com

The Slovenian resort of Kranjska Gora, which is in the country's northwest, is well-liked by fans of winter sports. Visitors who ski and snowboard in the Vitranc resort fill Kranjska Gora in the winter, taking advantage of the area's regular snowfall and challenging terrain.

But with strenuous treks and the option to rent mountain bikes nearby, summer is just as enticing. Kranjska Gora is a picturesque place to unwind, relax in posh hotels, and dine at world-class restaurants drawing tourists from all over the world, even if you're not into outdoor sports.



Since 1982

فوننو ماجيك العالمية (ذ.م.ع.)

PHOTO MAGIC INTL. (L.L.C.)

Professional Lady

PHOTOGRAPHER

&

**Video Maker available for
Arabic wedding &
other corporate events**



Book a Session Now at

Tel:04-3984718 04-2857796, or info@photomagic.ae



Source: www.state.gov

SLOVAKIA

Slovakia, which is located right in the middle of Europe, is a joy to travel through. Its breathtaking terrain conceals crumbling castles and medieval villages, as well as a wealth of intriguing historical sites and cultural attractions for you to explore.

Due to its strategic location, the nation has been conquered and ruled by a wide range of people, including the Mongols, Hungarians, Ottomans, and Czechs; Slovakia only became a nation for the first time in 1993.

Despite its young, the nation's rich history and legacy are evident everywhere you go, and you may immerse yourself in a variety of regional traditions and customs. Slovakia is endowed with some stunning landscapes in addition to its many old cities and villages, which are fascinating to visit.

ORAVA CASTLE

Orava Castle appears impressive as it sits atop a rocky hilltop surrounded by a lush forest that cascades down its steep slopes. Rolling hills can be seen in the distance, and the Orava River flows beneath the castle's commanding cliff face.

Orava Castle, one of Slovakia's most stunning castles, was constructed in the 13th century, while earlier wooden palisades and defenses had previously inhabited its prominent outcrop.

The castle exhibits elements of Romanesque, Gothic, and Renaissance architectural styles due to the expansions and alterations made by each successive generation. Its museum contains some amazing antiquated objects and archeological discoveries that illustrate its lengthy history. Once you pass through its several gates, walls, and fortifications, it is clear why the Orava Castle has remained unconquered for the many centuries that it has stood atop the bluff.



Source: commons.m.wikimed

HIGH TATRAS



Source: www.fanpop.com

The High Tatras offer some of the best hiking and rock climbing in the nation because they are home to the tallest mountains in the nation. In the winter, there are also a ton of fantastic slopes and pistes for skiing down.

The beautiful mountain range is truly magnificent; among its many slopes and valleys are hidden brilliant alpine lakes and meadows, and its rugged peaks stand up imperiously towards the heavens.

The snow-capped Mount Krivan is the most recognizable summit of the High Tatras, which hold a significant position in the national consciousness and are almost a national symbol. The mountain range is ideal for all kinds of outdoor activities because of its breathtakingly magnificent vistas. The views are truly out of this world, and there are several roads and trails for you to stroll, bike, or ski along.



**GLOBAL
LEARNING
CENTER**

**GET YOUR
WES
ATTESTED
BBA DEGREE
FROM
UK**



**GUARANTEED ADMISSION | EASY &
AFFORDABLE PROJECT BASED DEGREE
PROGRAM**

- WES Approved Degree
- Highly Affordable | Installments
- Degree Accredited Embassy & MOFA UAE
- Ranked Top 100 University in UK
- Project based assignments making the program easy & quick

Contact us:

+971 58 540 5148

info@glcuniversity.ae



SERBIA

Source: heyexplorer.com

The Pannonian Plain and the Balkans meet in Serbia, formally the Republic of Serbia, a landlocked nation in Southeast and Central Europe.

Serbia is a landlocked nation in Europe's Balkan Peninsula. It makes up for its lack of coasts with beautiful rivers, majestic mountains, and fertile plains.

Serbia is well-known for both its national brandy, rakija, and its capital city, Belgrade. The nightlife, palaces, fortresses, and tennis player Novak Djokovic are among Serbian attractions.

Additionally, there are many wonderful qualities regarding the locals. The people of Serbia are cheerful and laid-back. A kind and creative community that is happy to share their country with you can be found hidden behind a hard façade.

ZLATIBOR

Western Serbia include the mountainous region of Zlatibor. Outdoor activities and health tourism are very prominent there.

On your hike, be sure to pass by the picturesque meadows and make a stop at the charming ethnographic town. If you want to take the easy way out, Zlatibor also has the longest panoramic gondola lift in the entire globe.



Source: turisttotal.com

DANUBE RIVER



Source: www.tinari.com

In Serbia's history and culture, the Danube River has been crucial. The country's central river connects it to a number of other European neighbors.

The numerous castles and fortifications that line its riverbanks provide historical context. Nowadays, you may also find splavs, festivals, and river cruises around its banks.

BIND

“Business and Investment Development”



Monthly online Magazine coming out from June 2022

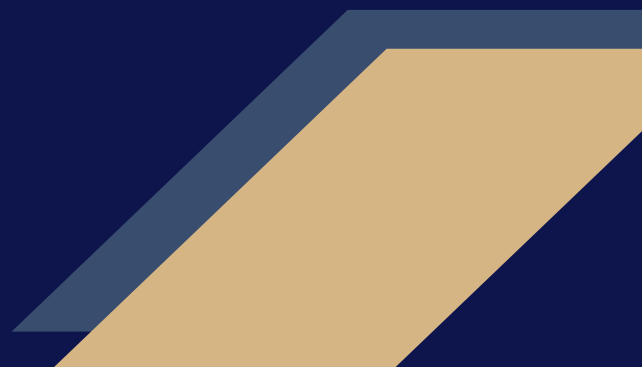
With the changing world which is now much more dependent on IT and without any doubt we are in a digital arena. But still we cannot forget the effective role of our achievement of past and specially in the third world countries where still it needs time to catch up with the fast moving first world IT industry. Our newly launched portals BIND where it stands for “Business and Investment Development” which basically caters for trade or Business Development between two parties or countries. BIND is a matchmaking portal for two parties looking for each other.

To support this B2B match making portal which is 24/7 online portal, totally IT driven, we are initiating a magazine by the name “Global Business Opportunities” the name very much indicate about the magazine itself.

The magazine which will be available electronically and the salient features are that it will involve government departments and authorities to identify and make public the opportunities countries and different ministries are offering regarding Business/ Trade and Investment and inviting the prospective Business houses to make use of these opportunities, irrespective of their domicile and geographical locations. Likewise Private sector also bring to the notice of such opportunities they are looking forward to expand their businesses to different geographical locations and may be keen to invest at some attractive locations and proposals.

The niche aspect of the magazine is that it's by “Business community for Business community” meaning all businesses are welcome to contribute the write-up about these opportunities add also about their businesses, it's like a global introduction of your business, where you are looking for Partners, associates or in any other form of working together with likeminded.

So what you are looking for take your pen and start writing what you were thinking from long for the expansion of your business and investment opportunities you came across to in the recent past! We invite everyone who would like to contribute to this very your own magazine for the benefits of our business community across the globe.





HOW WE CAN HELP YOU

- ✓ Publishing about your business
- ✓ Promote your presence / business by way of editorial & pictorial and let interested parties contact you
- ✓ If you have a Global business or planning to becoming Global, join us and we will take you there
- ✓ Information about Business & Investment opportunities (BIND) across the world, from the respective countries & authorities

Share your
success story
with us

Contact us: info@bindb2b.com



BINDB2B



We are at your service 24/7

We're here to assist you with your worldwide expansion. Our website supports all of our users in creating a portfolio that allows them to conduct business in any area of the world without difficulty.

www.bindb2b.com

Email: info@bindb2b.com

